



# Bethlehem Art Association

Sept./Oct., 2015  
Newsletter



Hello Artists,

Welcome to a new year with the Bethlehem Art Association. I hope you all had a pleasant and productive summer.

A highlight of my summer was visiting the new Whitney Museum in NYC. The current major exhibit is "America is Hard to Find". It is a comprehensive review of American art from the beginning of the 20th century through the present. The exhibit will be open through September 27, and it is certainly worth a visit.

This year's schedule includes a rich and varied calendar of events. We will again do a themed show at the Bethlehem Town Hall that will feature images of the Town of Bethlehem. Last year "Bethlehem Scenes" was a great success because of the popular response to images of our hometown.

Once again, in order to give people a preview of what is to come in the fall and spring workshops, we will have the artists who are scheduled to conduct workshops also make a presentation at a monthly meeting prior to the workshop.

While we usually have artists do the presentations at our monthly meetings, we are making a slight change this year. One of our meetings will be dedicated to hearing advice from a professional framer on how to enhance artwork through framing.

I want to thank all the people who have helped with the various tasks that are involved in running the Association. I was very gratified this past year when people stepped forward to fill a large number of positions that had been suddenly vacated. I particularly want to wish Penny Koburger all the best in her move to New Hampshire and thank her for her service as President of the Association for five years as well as the many tasks she continued to perform. Penny also was a great help to me in assuming my new role. Sandy Dovberg and Lee Grefalda are two other people who have moved away from the area and deserve special thanks for the jobs they did for us.

Peter

### ***BAA Mission Statement***

The BAA is a focal point for all kinds of visual art activities in Bethlehem.  
We promote art, art activities, and artists in Bethlehem.

[www.bethlehemartassociation.com](http://www.bethlehemartassociation.com)

*Please welcome new members Heidi Weinman, Doreen Montemayor, Kelly Welton, Jay "Fishy" Fullum, Athena Coburn, Kristine Kelly, Marsha Lia Walton and Susan Cohen*

#### President

Peter Keitel: 439-2620

[pjkeitel@gmail.com](mailto:pjkeitel@gmail.com)

#### Vice President

Jacqueline Smith: 489-1882

#### Treasurer

Rita Buttiker

#### Corresponding Secretary

Diane Wozniak

#### Recording Secretary

Laurel Petersen

#### Community Spaces

Beverly Braun: 489-0601

#### Membership Chair

Gary Mehlum: 482-8606

[gmehlum@gmail.com](mailto:gmehlum@gmail.com)

#### Newsletter

Ellie Prakken: 439-7559

[emprakken1@verizon.net](mailto:emprakken1@verizon.net)

#### Exhibitions/Shows

Beverly Braun

Laura Garramone

Laura Jonas

George Dowse

#### Farmers Market

Nancy Demetriades: 439-0086

#### Publicity

Susan Keitel

#### Students Awards

Dale Crisafulli

#### Scrapbook

Joan Van Alphen

#### Webmaster

Peter Keitel

#### Workshops

Jacqueline Smith

Bob Lynk

#### Refreshments

Diane Wozniak



## *Meetings*

**Thursday, September 17, 6:45 p.m.**

**Painting with oil sticks by Kim Bach**

Our first presenter of the new season will be Kim Bach. Kim is a painter who creates robust and energetic works that create a sense of motion. Kim's current favorite subjects are flowers, horses, and pears, depicted in dramatic form using oil sticks. Kim has had a residency at Yaddo, has studied at the California College of Arts and Crafts and has an MA degree from Long Island University, Brooklyn. She is represented by the McDaris Fine Arts Gallery in Hudson and her work can be seen at [www.kimbachartist.com](http://www.kimbachartist.com)



***Morning Mist by Gary Shankman***

**Thursday, October 15, 6:45 p.m.**

**Oil Painting by Gary Shankman**

Gary Shankman will appear twice in this year's schedule. He will be the presenter at the October 15 meeting and will also be conducting the Fall Workshop on November 14. Gary has been a frequent juror for our shows at the Library and will join us this year to show us his skills as an oil painter. Gary has a Bachelor of Fine Arts degree from Boston University and a Master of Fine Arts degree from American University. Gary is a full professor at Sage College of Albany and his oil paintings have been on display internationally.



## News of Our Members

**Barbara Walter** has an exhibit of her oil paintings called "Down on the Farm" from Oct. 3 to Oct. 25 at the Big Eye Gallery in South Westerlo. The opening reception is Oct. 3 from 1-4 p.m., which is also Greenville Day. Fiberglass ducks will be on display around Greenville, some painted by BAA artists.

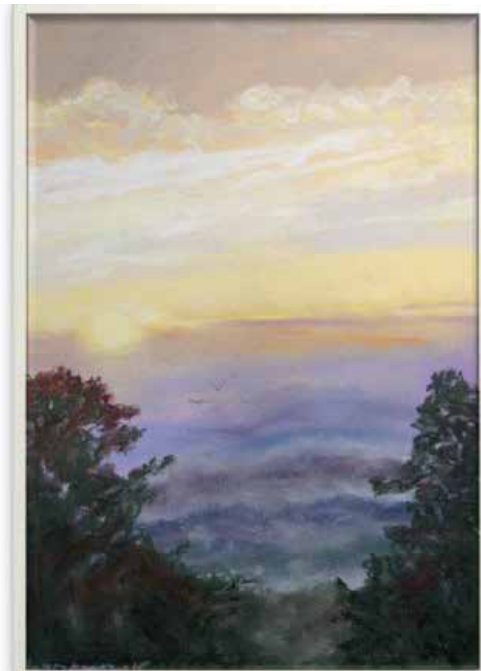


**Lorraine Chesin** is showing in the "Artist Loft" at Angelo's 677 Prime restaurant in downtown Albany.

Longtime BAA member Helen Smith passed away July 23, 2015.

## INTERPRETATIONS BY LAURA GARRAMONE

SEPTEMBER 1, 2015 - SEPTEMBER 25, 2015  
BLUE HILL GALLERY  
COLUMBIA GREENE COMMUNITY COLLEGE  
Monday – Thursday 8:00 am – 8:00 pm  
Fridays – 8:00 am - 5:00 pm  
Saturday – 12:00pm – 5:00pm  
Closed Sunday  
Opening Reception September 1st 2015, 6-8 pm





## Meeting Recaps and More News

### BAA Spring Show

The May show at the Bethlehem Public Library was another great success. Many thanks to the Exhibit Committee, the Show Committee, and the Judge, Ed Ticson. Prize winners in the show were:

<b>Best in Show:</b>	<i>Bliss</i>	<b>Carol Turner</b>
1st Place:	<i>Feura Bush Industry</i>	Kevin Kuhne
2nd Place:	<i>Carnaval</i>	Ellie Prakken
3rd Place:	<i>Lake George</i>	Penny Koburger
HM:	<i>Unexpected Joy</i>	Joan Krathaus
HM:	<i>Wintery Path</i>	Rita Buttiker
HM:	<i>Meg</i>	George Dowse



### Bethlehem Town Hall Show

The second annual Scenes of Bethlehem Show will be held at the Bethlehem Town Hall in October and November. The inaugural show last year was highly successful with at least six pieces sold. People responded very well to images of the area in which they live. Submissions must be of a scene in the Town of Bethlehem. Exceptions can be made for places like the Five Rivers Environmental Center. After all, it has a Delmar address. Preference will be given to works that were not in last year's show, but repeats will be accepted if needed to fill the space. If you have an image of Bethlehem that you would like to place in this show, please contact Peter Keitel – [pjkeitel@gmail.com](mailto:pjkeitel@gmail.com) or 588-0005.

### Bethlehem High School Scholarship Winners

Mary Katherine Palmerino and Alexandria Plouman were the Bethlehem High School seniors who each received a \$250 scholarship from the Bethlehem Art Association in May. The scholarships were awarded in memory of long time BAA members Barbara Wooster and John Hotchin. Dale Crisafulli made the presentations at the awards ceremony.

**Don't forget to show you membership card  
at Arlene's Artist Materials  
for your 10% discount.**



## *Meeting Recaps and More News*

### **BAA Picnic**

The annual BAA June picnic was hosted this year by Nancy and Bob Lynk. Our deepest thanks to them for making their lovely home by the lake in Rensselaerville available to us.



### **Raffle of Edwin Becker Painting**

The 2015 BAA Scholarships for Bethlehem High School students were funded in part by the raffle of a painting by Edwin Becker. The painting was generously donated by Joan Krathaus. Edwin Becker was a well know area artist who did the large mural in the Bethlehem Public Library. The raffle drawing was held at the June BAA meeting and the winner was BAA member Jeanette Young.



## Membership

***Please note that dues are due September 1.***

*We need to get the membership information in by then, so we can produce our directory in a timely manner. Also, it is important to indicate your wishes in regards to your email address.*

*Many people like to communicate by email and it would be handy to publish that information, unless it is something you want to keep private.*

*The BAA runs on volunteer power, so be sure to indicate your areas of interest.*

*For information contact Peter Keitel at 439-2620*

Mail this form with your check for \$25 written to the **Bethlehem Art Association** to the new membership chairperson, Gary Mehlum, 34 Hedgerose Lane, Delmar, NY 12054.

***Dues should be sent in at the beginning of the fiscal year which is September 1.***

Final deadline for being listed in the directory is October 31.

Name: \_\_\_\_\_

Street: \_\_\_\_\_

City: \_\_\_\_\_

Zip Code: \_\_\_\_\_

Telephone: \_\_\_\_\_

E-mail Address: \_\_\_\_\_

I would prefer to receive my newsletter via email:  Yes  No

Please publish my email address in the membership directory:  Yes  No

I can help with:  Organizing/hanging shows  Workshops  Refreshments  Publicity

Newsletter  web  Other \_\_\_\_\_

## Delmar Farmers Market

There are still several openings available at the Delmar Farmers Market this year. Check the BAA website. Remember that we will not be participating in the indoor portion of the market this year.

Contact Nancy Demetriades at 439-0086 or [nademetri@yahoo.com](mailto:nademetri@yahoo.com) to sign up.



## Venues

### ***BAA Community Exhibit Schedule September 2015 through December, 2015***

Sign up at a monthly meeting to schedule a showing of your work  
or contact Bev Braun at 489-0601 or [bevbraun@nycap.rr.com](mailto:bevbraun@nycap.rr.com)

#### **VENUES RESERVED FOR BAA MEMBERS**

	SEPT	OCT	NOV	DEC
BONE & JOINT CENTER 2 halls, 20 hangers and 16 hangers	PAUL JOLICOEUR		BOB LYNK	
FOUR CORNERS LUNCHEONETTE 10 hangers - can hold doubles	DOREEN MONTEMAYOR	CAROL TURNER	DIANE WOZNIAK	DEE FOLEY
BANK OF COXSACKIE Rte. 9W, Glenmont - 13 spaces	LESLIE BERLINSKY	DARLA JOWETT		JAY FULLUM

#### **VENUES FREQUENTLY AVAILABLE FOR BAA MEMBERS**

***New! Big Eye Gallery Fine Arts and Crafts, 270 County Route 405, South Westerlo, NY***

Contact Hope Konecny at 518-966-5833

***Terra International Cuisine and the NuWave Café, 238 Washington Ave., Albany***

Contact Howard Katz at [howard@terraalbany.com](mailto:howard@terraalbany.com)

***Capital Bank, Slingerlands Price Chopper Plaza:***

Contact Greg Bruno at 518-694-5625 or email [gbruno@capitalbank.com](mailto:gbruno@capitalbank.com)

***Bethlehem Public Library, Delaware Ave., Delmar:***

Contact Alissa, 439-9314. Ask for the Information desk. Space is available on a 24 month cycle and requests are handled on a first-come-first-serve basis. Early on the first business day of the month appears to be the best time to submit requests for one of the two corridors.

***Beverwyck Independent Retirement & Assisted Living:***

Contact Jessica Newman, 451-2111. Beverwyck Lane/Autumn Drive, Slingerlands, 15 spaces, availability will vary. Please call.

***Greenville Public Library, Rte. 32, Greenville:***

Contact Stanley Maltzman, 518-634-7386. Two month showings. Space for up to 50 pieces.

***Uncommon Grounds Coffee & Bagels, 1235 Western Ave., Albany:***

Contact Jennifer Maher, 885-4857 or 542-1897. Please note that Ms. Maher also arranges exhibits for their Saratoga location on Broadway.

***Voorheesville Public Library: 51 School Rd., Voorheesville***

Contact Lynn Kohler at 765-2791 to schedule a show and reception.

***Bank of Coxsackie, Rte. 81, Greenville:*** Contact Rita Buttiker, 518-634-2272

***Green County Bank, Rtes. 32 and 81, Greenville:*** Contact Rita Buttiker, 518-634-2272

***Madison Theater Windows:*** Contact Lorenz M. Worden, 518-489-0866 <http://lorenzworden.wordpress.com>



## *This Year's Main Events*

*All Monthly Meetings begin at 6:45PM  
in the Bethlehem Public Library Community Room  
Please note! Regular meetings are not always on the 3rd Thursday*

- Thursday, September 17** ~ Demonstration ~ Painting with oil sticks by Kim Bach  
**Thursday, October 15** ~ Demonstration ~ Oil painting by Gary Shankman  
**Thursday, November 5** ~ Fall Show Submissions Drop-off At Bethlehem Public Library, 3:30-5:30 p.m.  
**Saturday, November 14** ~ Art Workshop ~ Oil painting by Gary Shankman  
**Thursday, November 19** ~ Fall Show Reception ~ Comments by Juror Deborah Bayly  
**Monday, November 30** ~ Fall Show art removal by 9:00 p.m. (**No Exceptions**)  
**Thursday, December 10** ~ Holiday Party ~ Demonstration by Ellie Prakken  
**Thursday, January 28** ~ Framing tips from Five Star Framing  
**Thursday, February 18** ~ Evaluation of member artwork by James Coe  
**Thursday, March 17** ~ Demonstration ~ Watercolor painting by Teresa Somaio  
**Wednesday, April 6** ~ Annual Meeting ~ Delmar Presbyterian Church ~ 7:30 p.m.  
**Saturday, April 16** ~ Art Workshop ~ Watercolor painting by Teresa Somaio  
**Thursday, April 21** ~ Pastel painting by Susan Story  
**Monday, May 2** ~ Spring Show Submissions Drop-off At Bethlehem Public Library, 3:30-5:30 p.m.  
**Thursday, May 19** ~ Spring Show Reception ~ Comments by Juror Jacqueline Watsky  
**Tuesday, May 31** ~ Spring Show art removal by 9:00 p.m. (**No Exceptions**)  
**Thursday, June 16** ~ Picnic at Rita Buttiker's

202 Orchard St., Delmar NY 12054

