



# Bethlehem Art Association

Jan./Feb., 2015  
Newsletter



Hello Artists,

We have just finished a busy year and 2015 promises to be even busier as the BAA becomes a cultural force in our community. In 2014 we concluded our first year of rotating shows at the Bethlehem Chamber of Commerce. We also had successful group shows at the Bethlehem Public Library, the Bethlehem Town Hall, and the Albany Visitors Center. Several new venues have become available for us to bring our art to the public.

This year's Town Hall Show was themed "Bethlehem Scenes" and was so popular that the theme will be repeated in the October/November 2015 Show. We must start getting ready now.

We had another very good year at the Delmar Farmer's Market. The market connects BAA artists more broadly to our community. Once again our presence there has resulted in a number of new members as well as exposure for current members. I look forward to the BAA being at the market again in 2015.

I want to thank all of the people who volunteered to carry out the work of the Association. Our Association could not function without volunteers and I hope that additional members will be able to share the work in the new year.

Here's wishing you all a wonderful 2015.

Peter Keitel

### ***BAA Mission Statement***

The BAA is a focal point for all kinds of visual art activities in Bethlehem. We promote art, art activities, and artists in Bethlehem.

[www.bethlehemartassociation.com](http://www.bethlehemartassociation.com)

*Please welcome new member Donna Stiglmeier, returning member Michael Galletelli and the correct spelling for Jan Silverman Pollow*

#### **President**

Peter Keitel: 439-2620

[pjkeitel@gmail.com](mailto:pjkeitel@gmail.com)

#### **Vice President**

Jacqueline Smith: 489-1882

#### **Treasurer**

Rita Buttiker

#### **Corresponding Secretary**

Diane Wozniak

#### **Recording Secretary**

Laurel Petersen

#### **Community Spaces**

Beverly Braun: 489-0601

#### **Membership Chair**

Sandy Dovberg: 435-9663

[sdovberg@gmail.com](mailto:sdovberg@gmail.com)

#### **Newsletter**

Ellie Prakken: 439-7559

[emprakken1@verizon.net](mailto:emprakken1@verizon.net)

#### **Exhibitions/Shows**

Beverly Braun

Laura Garramone

Laura Jonas

George Dowse

#### **Farmers Market**

Penny Koburger: 439-5678

#### **Publicity**

Susan Keitel

#### **Students Awards**

Dale Crissafulli

#### **Scrapbook**

Joan Van Alphen

#### **Webmaster**

Peter Keitel

#### **Workshops**

Jacqueline Smith

Bob Lynk

#### **Refreshments**

Diane Wozniak



## Meetings

**Thursday, January 29, 6:45**

**THE LAST THURSDAY IN JANUARY**



### Collage Demonstration by Kathryn Kosto

Kathryn Kosto will provide a unique and fascinating view of collage at the January meeting. Kathryn uses fabric and found materials to create windows into the past and is interested in exploring women's roles in these packages. Another wonderful aspect of Kathryn's work is how she combines poetry and image. Please visit [www.poetrycollage.com](http://www.poetrycollage.com) to learn more about Kathryn's approach to collage.

*darn!*  
by Kathryn Kosto

**Thursday, February 19, 6:45**

### Oil Painting by Takeyce Walter

Takeyce Walter is an artist and art instructor who works in both oil and pastel. Her favorite subjects are landscape paintings of the Northeast, with particular emphasis on rivers, lakes and the ocean. Takeyce is a prolific artist who has committed herself to completing one piece per week. Her work can be seen on [www.takeyceart.com](http://www.takeyceart.com). Takeyce will also be conducting the Spring Workshop on April 11. The demonstration and workshop will be on landscape painting in oil.





# News of Our Members



*The Science Girls*

## Lorraine Chesin

will be having a show at the Dietel Gallery at Emma Willard School along with Joan Oliver from January 16 to April 5, 2015. There will be a reception January 18 from 2-4 p.m. with a snow date of January 25.



*Laura Garramone*

## Kevin Kuhne

is exhibiting at the Bethlehem Public Library for the month of January, 2015. The theme of his show is "Down Rte. 144 in the Town of Bethlehem"



*Cedar Hill*



*Entry*



*Procession*

## Sandy Dovberg

will be having a solo show in Gallery 1 at the Southern Vermont Arts Center, Manchester, VT. It is one of 8 simultaneous solo shows with an opening reception for all artists on January 17, 2015 from 2-4 p.m. with the show running through March 8. [www.svac.org](http://www.svac.org)

*Sunflowers by Penny Koberger*



*Penny Koberger and Darla Davis Jowett* will be exhibiting at The Bone and Joint Center for the months of January and February.





## Meeting Recaps and More News

### Bethlehem Town Hall

“Bethlehem Scenes by Bethlehem artists at the Bethlehem Town Hall” was the theme of this year’s show. Nineteen BAA artists provided 23 images of the Town of Bethlehem for this show. The local scenes resonated well with the Bethlehem residents who passed through the Town Hall offices. At least five sales were made in the course of the show. Because of the success of this year’s show, we will repeat the theme for next year’s show. Priority will be given to images that have not previously appeared at the Town Hall. So let’s get busy. We have plenty of time.



*Study in Strata #3*

**Sandy Dovberg** will be having a solo show of almost entirely new paintings coinciding with the play "Souvenir" at Capital Rep Theater from February 27 - March 29, 2015 with a reception on First Friday, March 6 from 5p.m. until showtime. [www.capitalrep.org](http://www.capitalrep.org)

### Fall Workshop with Nina Stanley

Nina Stanley conducted the BAA Fall Workshop on November 15. The workshop was on still life drawing with charcoal or pencil focused on drawing drapery. Nina is a classical realist painter and drawer, and uses a classical approach to drawing drapery. She described basic rules and steps as well as the seven elements that comprise drapery anatomy. Nina was also our presenter at the October monthly meeting.



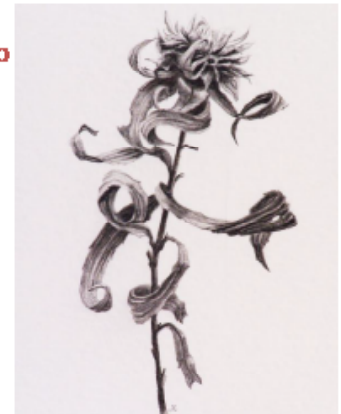
**Surrounded by nature, participants will develop observational skills and learn to render their observations into pencil/charcoal drawings.**

**Course Date:**  
21 February 2015  
9AM to 11:30AM  
**Course Registration Fee:**

**\$30.00 per person**

**Course Location:**  
The Bioreserve  
30 Old Rt. 9W  
Glenmont, New York  
[www.thebioreserve.org](http://www.thebioreserve.org)

**Contact Information:**  
Jocelyn Cole ~ Instructor  
518-753-2035  
[goldfinchhill@hotmail.com](mailto:goldfinchhill@hotmail.com)  
Dennis O'Leary  
518-482-8200  
[rdenol@hotmail.com](mailto:rdenol@hotmail.com)



**Observing  
Nature  
through Art  
Win**



## Meeting Recaps and More News

### November Meeting~Annual Fall Show

The Annual Fall Show was held at the Bethlehem Public Library in November. Gary Shankman returned as the juror. One of our most popular judges, Gary provided extensive and lively commentary about the items in the show at our November reception/meeting.

**The Best in Show Award** went to Ellie Prakken for “Blue Sails”. The other award winners were (in order of 1st, 2nd, 3rd and HM by category):

**Oil:** George Dowse, Karen Woodin, Lorraine Chesin and Dave Stephany

**Water Media:** Sandra Dovberg, Lynda Spielman, Barbara McGeachen and Penny Koburger

**Pastel:** Sandra Orris, Peg Vitro, Laura Garramone and Linda Nimmer

**Other Media:** Joan Krathaus, Bev Braun, Laurel Petersen and Rosemary McAvoy

**Photography:** Jean Francois, Paul Mosher, Peter T. Rossi and Ray Henrikson

The People’s Choice Awards went to (number of votes): Joan Krathaus (7), Jeanette Young (7), Laurel Petersen (7), Ellie Prakken (6), Lynda Spielman (6), George Dowse (6), and Gale Derosia (4).



*Judge Gary Shankman*

### Bethlehem Chamber of Commerce

Because of the success of the “Bethlehem Scenes” theme at this year’s Town Hall show, it is being continued at the Bethlehem Chamber of Commerce. Space limitations allow for only a dozen pieces to be moved to the Chamber for the December/January showing. Additional pieces will be on exhibit in February/March. However, there is still room for additional submissions to be included in for February/March. If you have a “Bethlehem Scene” that you would like to include, contact Peter Keitel ([pjkeitel@gmail.com](mailto:pjkeitel@gmail.com)).

### December Meeting Demonstration with Laura Garramone



The tradition at the December Holiday meeting of our organization is to offer a presentation by a BAA member artist. Laura Garramone gave a wonderful pastel painting demonstration at our final 2014 meeting. She included an excellent slide show of her work and an impressive demonstration of her style of pastel painting. Laura’s willingness to share her skills is greatly appreciated.





# News

## Volunteers Needed

Volunteers are needed for several jobs. Here's a list with short descriptions of what each job involves. Call Peter Keitel for more information.

**Job:** Produce programs for the Library shows.

**Description:** Produce and publish lists of artwork at the spring and fall shows.

**Job:** Coordinate People's Choice Awards

**Description:** Produce, collect, and tally ballots at spring and fall shows. Publish results.

**Job:** Web Assistant

**Description:** Maintain "Where to see BAA Artists" page of the website. Helps to be familiar with iPage/Weebly.

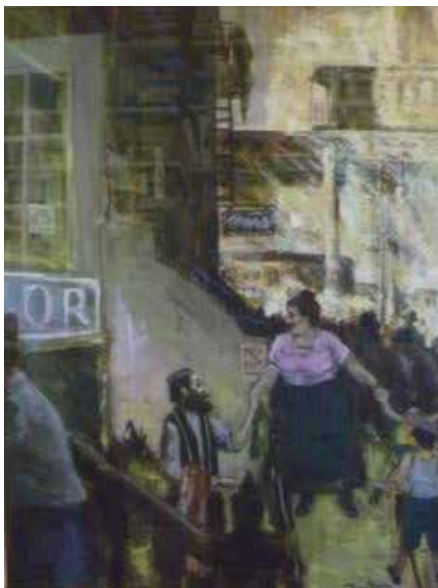
## In Memorium

**John Hotchin**, passed away on August 1, 2014 at the age of 93. John was a founding member of the Association, a lifetime honorary member, and an early President. Although inactive for many years, John is remembered for his work in several media, including sculpture used to adorn his front yard.

**Barbara Wooster**, a founding and lifetime honorary member of the BAA, passed away on October 25, 2014 at the age of 79. Barbara was an excellent watercolorist who produced a large volume of work. Those present at the November BAA meeting had the privilege of viewing a slide show of many of Barbara's wonderful works.

**Marjorie Scilipote** passed away on November 22, 2014 at the age of 92. Marge was a long time member of the BAA as well as several other area art associations. She was an art instructor at the Louise Corning Senior Center for 30 years. Marge is remembered for watercolor and pastel paintings as well as pen and ink combined with watercolor.

## Bethlehem Art Association Scholarship Raffle



The prize in this year's raffle which funds the scholarships that the BAA awards to Bethlehem High School students is a mixed media painting, "**Old New York**", by **Edwin Becker**. The painting is 17" X 23" and includes a frame (24" X 30"). Thank you to Joan Krathaus for generously donating it. Everyone who has visited the Bethlehem Public Library has seen Edwin Becker's work in the large mural in the main hall. The raffle painting is on display at the Bethlehem Chamber of Commerce, 318 Delaware Ave, Delmar, NY. By getting an earlier start this year, we should be able to generate sales at the Delmar Farmers Market.

Tickets are \$5 each. Only 100 tickets will be sold. Mail ticket, along with a check (payable to BAA) to cover the number of tickets purchased to:

Laura Jonas  
29 Dover Drive  
Delmar, NY 12054

### Bethlehem Art Association Scholarship Raffle

Prize: Mixed Media painting "Old New York"  
by Edwin Becker

Name \_\_\_\_\_

Address \_\_\_\_\_

Phone \_\_\_\_\_





## Venues

### ***BAA Community Exhibit Schedule January 2015 through April 2015***

Sign up at a monthly meeting to schedule a showing of your work  
or contact Bev Braun at 489-0601 or [bevbraun@nycap.rr.com](mailto:bevbraun@nycap.rr.com)

#### **VENUES RESERVED FOR BAA MEMBERS**

	JAN	FEB	MAR	APR
BONE & JOINT CENTER 28 hangers (2 halls, 14 each)	DARLA JOWETT PENNY KOBURGER		OPEN PETER KEITEL	
FOUR CORNERS LUNCHEONETTE 10 hangers - can hold doubles	JODY BOYD	LYNN DEARSTYNE	LAUREL PETERSEN	PAUL JOLICOEUR
BANK OF COXSACKIE Rte. 9W, Glenmont - 13 spaces	PENNY KOBURGER	OPEN		OPEN

#### **VENUES FREQUENTLY AVAILABLE FOR BAA MEMBERS**

##### ***New! Terra International Cuisine and the NuWave Café, 238 Washington Ave., Albany***

Contact Howard Katz at [howard@terraalbany.com](mailto:howard@terraalbany.com)

##### ***Capital Bank, Slingerlands Price Chopper Plaza:***

Contact Greg Bruno at 518-694-5625 or email [gbruno@capitalbank.com](mailto:gbruno@capitalbank.com)

##### ***Bethlehem Public Library, Delaware Ave., Delmar:***

Contact Alissa, 439-9314. Ask for the Information desk. Space is available on a 24 month cycle and requests are handled on a first-come-first-serve basis. Early, on the first business day of the month appears, to be the best time to submit requests for one of the two corridors.

##### ***Beverwyck Independent Retirement & Assisted Living:***

Contact Jessica Newman, 451-2111. Beverwyck Lane/Autumn Drive, Slingerlands, 15 spaces, availability will vary. Please call.

##### ***Greenville Public Library, Rte. 32, Greenville:***

Contact Stanley Maltzman, 518-634-7386. Two month showings. Space for up to 50 pieces.

##### ***Ultraviolet Café, 292 Delaware Ave., Albany:***

Contact Annette Nanes at 434-0333 or stop by when at or near the Spectrum Theatre next door to the Ultraviolet Café.

##### ***Uncommon Grounds Coffee & Bagels, 1235 Western Ave., Albany:***

Contact Jennifer Maher, 885-4857 or 542-1897. Please note that Ms. Maher also arranges exhibits for their Saratoga location on Broadway.

##### ***Voorheesville Public Library: 51 School Rd., Voorheesville***

Contact Lynn Kohler at 765-2791 to schedule a show and reception.

##### ***Bank of Coxsackie, Rte. 81, Greenville:*** Contact Rita Buttiker, 518-634-2272

##### ***Green County Bank, Rtes. 32 and 81, Greenville:*** Contact Rita Buttiker, 518-634-2272

##### ***Madison Theater Windows:*** Contact Lorenz M. Worden, 518-489-0866 <http://lorenzworden.wordpress.com>



## *This Year's Main Events*

*All Monthly Meetings begin at 6:45PM  
in the Bethlehem Public Library Community Room*

- Thursday, January 29** ~ Demonstration ~ Collage by Kathryn Kosto  
**Thursday, February 19** ~ Demonstration ~ Oil Painting by Takeyce Walter  
**Thursday, March 19** ~ Evaluation of Member Artwork by Jacqueline Watsky  
**Wednesday, April 8** ~ Annual Meeting ~ Delmar Presbyterian Church ~ 7:00p.m.  
**Saturday, April 11** ~ Art Workshop ~ Oil Painting by Takeyce Walter  
**Thursday, April 16** ~ Demonstration ~ Photography by Dan Region  
**Friday, May 1** ~ Spring Show Submissions Drop-off at Bethlehem Library ~ 3:30-5:30p.m.  
**Thursday, May 21** ~ Spring Show Reception ~ Comments by Juror Ed Ticson  
**Saturday, May 30** ~ Spring Show Art Removal by 5:00p.m. (**No Exceptions**)  
**Thursday, June 18** ~ Picnic at Bob Lynk's

14 Maryea Lane, Delmar, NY 12054

