



*Welcome to the Bethlehem Art Association
Virtual Annual Spring Show
Awards Presentation*

May 20, 2021

Judge: Eden Compton

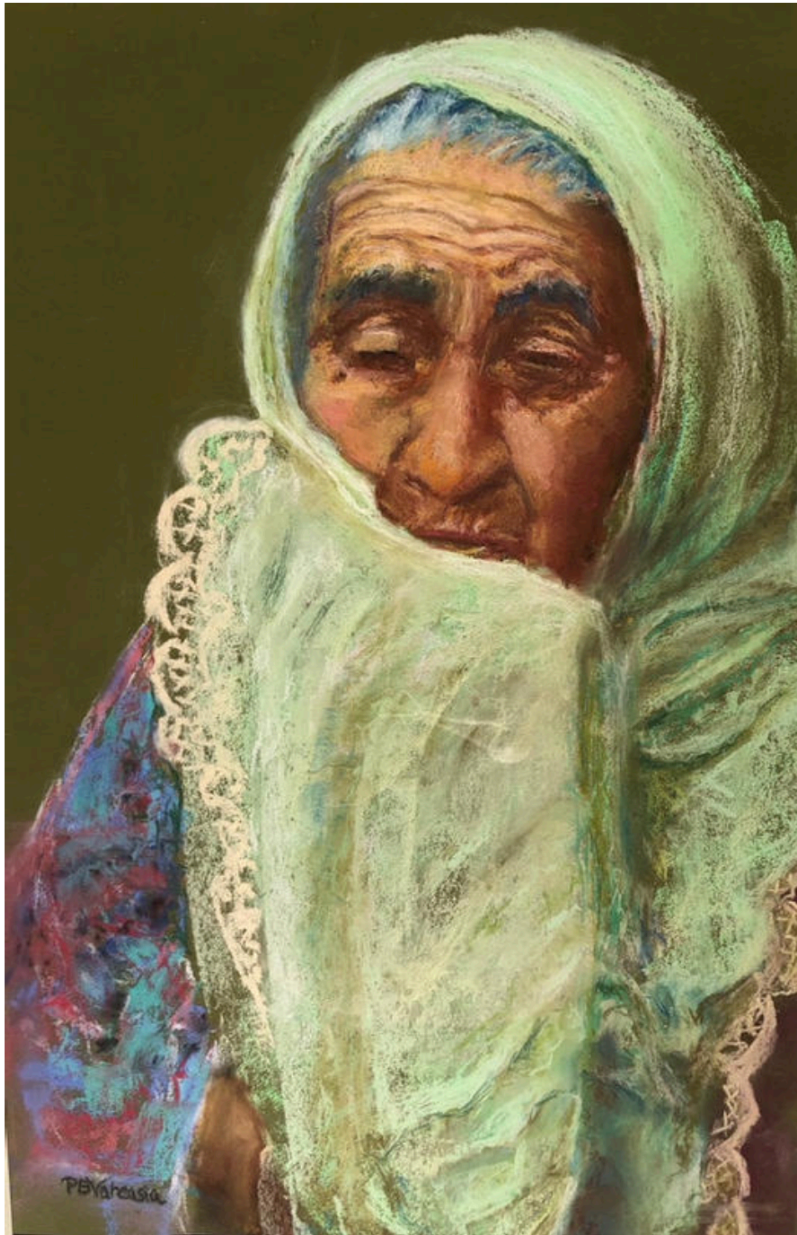
Judge's Criteria



How I judged the show. I looked at all the paintings quickly in a first round and noted which ones initially caught my eye. I then went back and looked several times at all the paintings for the following:

1. **Concept** - Does the work communicate something - emotion, feeling, mood message or sense of time and or place. Is it unique? Does it catch my eye or stand out?
2. **Composition and Design** - Does the artist accomplish his or her intent via composition, edges, value, color, line and shape?
3. **Technique** - Lastly, how proficient is the artist in his chosen material in terms of technique. Does the technique contribute to the overall concept.

Eden Compton



Best in Show



Hopeful #1

by Patricia Byrne Varcasia

This is a soulful painting. It communicates emotion and feeling. The composition is well executed to focus on the face with the large light value creating a path through the painting to the focal point on the face. Very well done without being overly rendered. The suggestion of the lace details and wrinkled skin without being overly detailed shows the artist has control over her medium.



First Place



Moving On #39

by Christine Capuano

This painting tells a story with a bit of mystery. Great example of creating a concept for a painting and executing it well through the elements of shape, value, line and color. The flowers are the center of attention but the extra characters in the background really tell the story. The composition engages and involves the viewer into completing the narrative. The red detail of the luggage is a nice accent without overpowering the composition and the shape of the shadow is lovely.

Second Place



Radio Days #23

Lynne Kaiser



This is a fun and unique painting. The use of patterns and the flat perspective reminds me of a cross between Vuillard and Braque. It is a contemporary treatment of an old fashioned subject. Sophisticated use of a complementary color scheme really unifies the piece.



Third Place



Rhapsody in Blue and Green #18

By Ellie Prakken

This is a great example of how the traditional elements of shape, color and design work together to communicate a concept in both representative and abstract paintings. The design and placement of the shapes helps to move the eye around then composition. The white calligraphic element provides visual interest while engaging the viewer into deciphering it and reinforcing the overall concept of the painting. The analogous blue-green color harmony with the small splash of the discordant red-orange element really makes the overall piece eye catching.



Honorable Mention



Misty Spring Morning #18

By Peter Keitel

This is a nice mood piece and really communicates the idea of a cool, misty morning. You feel like you are standing on a vista in the mist. The composition creates a sense of depth with soft edges and subdued color which draws you deeper into the picture. The artist demonstrates a nice control of values and perspective.



Honorable Mention



Yadow Stream #26

By Karen Woodin

This painting really captures a sense of place. It is a moment in time effectively communicated through the composition, color and edges. The artist does a very nice job of using different brushstrokes, soft and hard edges to describe the different textures of the landscape. The handling of the tree leaves and water reflections is particularly well done.



Honorable Mention



Serene Reflection #21

By John Smolinsky

This is a clever but simple composition and demonstrates how a variety of texture and pattern can create visual interest. The circle shape really pulls it together and leads your eye to the mirror which is the whole concept of the piece. Well thought out and executed.

A Special Thank You to the Following:

- **Eden Compton** for her insightful judging of the artwork.
- **Peter Keitel** for his work putting the show on the website.
- **Ellie Prakken** and **Deb Shaw** for their work as Co-Chairs for BAA Shows.
- **Criss Macaione** for hosting the Zoom presentation.
- BAA President **Lynda Spielman** and the rest of the Committee Chairs.
- All the BAA members who participated in the Show.

