



Bethlehem Art Association

Mar./Apr. 2024
Newsletter



Hello Fellow Artists:

As we turn the corner into spring, it is also the period when we, that is those of us involved in running the BAA, begin to focus on next year's programs. We make every effort to plan programs that cover a variety of media or techniques offered by interesting and experienced artists. It is not always easy. As I have reminded members in the past, we welcome ideas and suggestions and these can be passed along to me or any other BAA officer. Additionally, our annual planning meeting, set for Thursday, April 11 via Zoom, is open to all members.

Regarding our meetings, chances are most of you attend our monthly meetings if we feature your particular interest or media. And yet, some of you never attend. I would suggest, however, that every demo and featured program can offer "nuggets" – useful takeaways or reminders of the fundamentals and principles of art. In addition, our meetings offer the bonus of sharing and learning with colleagues!

There are also other opportunities to participate in the BAA community. For example, in April, we will have an interesting workshop featuring abstraction. Also, our website Challenge and Salon pages allow you to post your work and even your work that is in process.

Wishing you all a pleasant start to Spring in good health and inspiration.

Lynda

BAA Mission Statement

The BAA is a focal point for all kinds of visual art activities in Bethlehem.
We promote art, art activities, and artists in Bethlehem.

www.bethlehemartassociation.com

*Please welcome new members:
Mary McHugh and Tyswan Stewart*

President

Lynda Spielman
718-463-5679
lyndaspelman@aol.com

1st Vice President

Peter Keitel
pjkeitel@gmail.com

2nd Vice President

Open Treasurer

John Moser

Recording Secretary

Laurel Petersen

Community Spaces

Jacqueline Smith
TShock1882@aol.com

Membership Chair

Gary Mehlum: 482-8606
gmehlum@gmail.com

Newsletter

Ellie Prakken: 439-7559
ellieprakken@gmail.com

Exhibitions/Shows

Ellie Prakken

Publicity

Lynne Kaiser

Student Scholarships

Lynda Spielman

Webmaster

Peter Keitel
Susan Trottier

Workshops

Denise Crisafulli

Refreshments

Sue Nye



Meetings

Monday,
March 18, 6:45 p.m.

Abstract Multi-Media Painting with Kit Kelly Yadniak

Kit Kelly Yedinak was born in Yakima, Washinton and spent most of her life living along the West Coast with her family. She spent her childhood creating art and reading books, then she attended college in the Los Angeles area. After she got married and had two children, her family moved to Wilmington, North Carolina where she received a Fine Arts B.A. in 2006. She began to work in abstracts using various media and techniques, and pottery. In 2015 her family moved to New York and eventually she received a Masters in the Studio Arts in 2022. She is a visual artist who spends her time creating art in her studio.



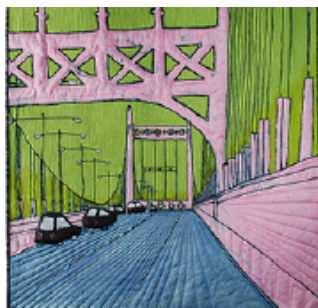
"As evidenced by the abstract work I create, my curiosity is inspired by my desire to find a connection to realms of the physical and spiritual worlds. The human existence affected by random, but eternally creative and destructive forces, is the foundation of my art. I have always been driven to explore and to share this awareness as an artist." **Kit Kelly Yadniak**



Spring Street



80 8th Avenue



Triborough Bridge

Wednesday, April 24, 6:45 p.m. Fabric Art with Kathy Velis Turan

Kathy Velis Turan is a mixed media artist now living and working in the Hudson Valley region of New York. Her artwork has been exhibited nationally and internationally. Her focus may be realistic or abstract, but always intensely graphic. She employs surface-design techniques which include silk screen printing, fabric painting, photo transfer and embellishing with free-motion quilting, hand stitching and beading on the whole-cloth surface of her work. She also silk screens on paper, then paints and uses other surface design techniques and media. She has curated fiber arts exhibitions and was the Visual Arts Director for the Greene County (NY) Council on the Arts. She was also the Advertising Director of Fiber Art Now Magazine. She is now a full-time artist.

To learn more about the artist and see more of her work go to www.kvelisturan.com



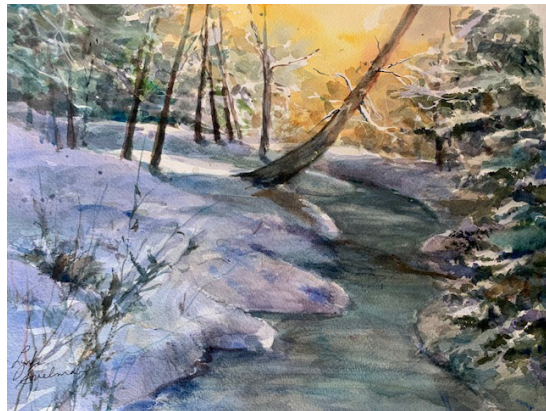
News of Our Members

Diane Wozniak's watercolor "Williamsburg Stroll" will be in the Central Adirondack Art Show at the View Art Center in Old Forge, NY this spring, from March 23 to May 25.



Williamsburg Stroll

Lynda Spielman has three paintings, including "Icy Morn", accepted in the Annual Nature Show at Thacher Nature Center, to be held March 9-29. Artists Reception March 9, 12-3.



Icy Morn



Barb Lennox has 9 paintings on display (and for sale) at the Whitney Book Corner, 105 Clinton St, Schenectady NY. Their hours are Monday-Friday 10-4, Thursday 10-7, and Saturday & Sunday 10-2. There will be a artist reception on March 8th from 5-7. The paintings will be there until the end of March.

She will also be exhibiting 4 Collage pieces at the Jan Rutland Artists Space which is in The National Bottle Museum, 76 Milton Avenue, Ballston Spa NY. The show runs from February 17 through March 16, and is open Wednesday through Saturday 10-4.



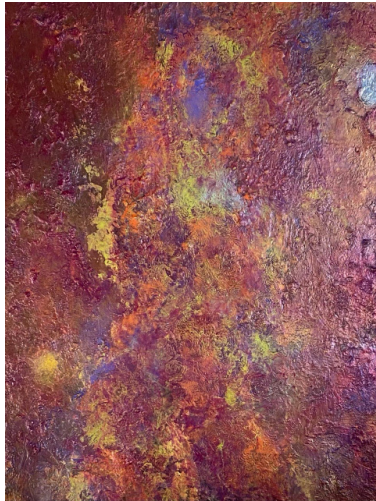
Drift Clouds on the Sea

Kristine Kelly, abstract expressionist artist, will be featured in the April issue of both the print and online editions of the magazine *518Profiles*. She discusses her artwork, motivations, and tools and techniques in the article. Here is an example of her painting style, the 16 x 20 "Drift Clouds on the Sea".



News

In this workshop, Kit will discuss the color, composition and endless possibilities for a range of materials that can be used to create non-representational or abstract style artwork. She will discuss and demonstrate the unique process she uses to create interesting effects and textures using materials such as marble dust, dried flowers, paper, etc. Her primary materials are



Supply list for the workshop is on the BAA website

Spring Workshop

Oil, Cold Wax and Mixed Media Painting with Kit Kelly Yedniak

Saturday, April 13

9am to 4pm

**Delmar Presbyterian Church
585 Delaware Ave., Delmar**

\$35 ~ Members only

Register online via the BAA website under News
or contact Denise Crisafulli at 518-339-6170 or
denisecrisafulli25@gmail.com

wood panels, Arches oil paper, oil paint (or acrylics), cold wax medium, Gamsol liquid, Galkyd gel and others.

Who Is This Guy Anyway?

Sal Aiello

Do you know me? Probably not since I haven't been to too many meetings lately. Excuses? I have plenty. Many of them are caused by some malady or other.

I have been confined to a wheelchair, or a faltering walker, or an all too comfy recliner with a series of sketch pads planted securely on my lap for the past year. With the good graces of PT and OT people I have learned to take a few new faltering steps and learning the skills of holding objects securely (such as oil paint brushes and drawing pencils) in my sometimes unresponsive hands. I've had to rely on my wonderful wife Nan for my transportation, my meals and other critical chores.

I spend three days a week, four hours and fifteen minutes a time, in dialysis in East Greenbush. Believe me it takes a toll on the system and depletes the energy and desire to move forward on anything creative. Most people in the clinic nap or

watch the hum-drum world of day time television. Not me. I pull together whatever strength I have left to draw what I have come to know from my memory. Trees, old barns and interesting landscapes that I cull from photographs I have taken while a front seat passenger.



Bits and pieces that may make an interesting composition some day when I'm allowed into my studio once again. Speaking of my studio, it was once a mecca where I could work uninterrupted on my painting, listening to my favorite music. I was content. But now, in order for me to work, changes had to be made. Tables and benches had to be altered to access to a wheelchair. Boxes and shelving had to be cleaned up and lowered. Overall, my haphazardly way of doing things had to be changed. I now had to have space and floor room ready for the movement of a wheelchair and its fumbling occupant.

Any coordination I once had is gone and had to be relearned. Luckily no one sees me as I "race" around the room grasping paint tubes, brushes and canvases and put them into position in order to work.

Since this is a newsletter for an art association I figure it's important to show my most recent painting and the sketch that preceded/generated it. I have included them here. Thanks for allowing me to spout off and hopefully I'll see everyone at the next meeting. **Sal Aiello**





Meeting Recaps and More

January Zoom

Water Media Demo with Sterling Edwards

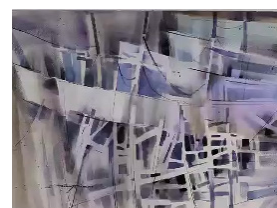
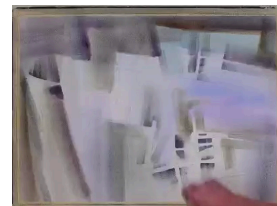
BAA kicked off the New Year with a very special event for its opening General Membership Meeting. Renowned water media artist Sterling Edwards presented a live Zoom demonstration of a stylized watercolor marine painting.

For his subject, Sterling chose to stylize a nautical scene. He began by quickly and loosely sketching boats in drydock, with all sorts of “clutter” everywhere, including boat hulls, ladders, odd scraps of lumber and various drydock structures. Overlapping shapes, negative painting, gradual buildup of color from midtones to darks, and saving white paper are among some of the techniques employed. Although stylized, the shapes remain recognizable as you view the completed piece.

Sterling Edwards’s laid back and informative style of teaching is as unique as his artwork. His demonstrations are typically peppered with amusing anecdotes and similes. His presentation for BAA was no exception. For example, to emphasize the importance of establishing a “focal point”, Sterling referred to legendary screen actor John Wayne. “John Wayne was always the star of the picture; The other actors were merely supporting players, there to draw the eye to Wayne.”

In under two hours, Sterling completed a full sheet watercolor painting (22 x 30) using his big-brush method. Going to his #6 rigger, he finished off the painting by adding calligraphic angular and curvilinear lines (don’t be too meticulous) and splatter (don’t overdo it). With a mix of violet and Payne’s grey on a #4 round brush, he showed us where to sign the piece (2” up, and 2” over) so as not to be cut off by a frame.

A lively Q & A session followed the demonstration. A BAA member asked, “How do you know when to stop?” Without skipping a beat, Sterling replied, “When you are holding the brush in your hand, and you don’t know what to do with it.” *Lynne Kaiser*



February Meeting Member Critique with Eden Compton



About 28 people came to our first afternoon meeting of BAA! Eden Compton is from Saratoga Springs. Her gallery Eden Compton Studio and Gallery is at 79 Beekman Street, Saratoga Springs. She teaches many classes, and workshops and showcases lots of local artists in her gallery. Much more information about her, her newsletter and blog can be found at www.edencompton.com

Eden had many very kind and helpful comments on our works. She mentioned that if you are painting realistically, you have to have light and shadow in your piece. She mentioned it’s helpful to do a sketch first and then to look at your piece in black and white to check your values. It’s also useful to have a hierarchy in your piece with more emphasis in some areas and softer emphasis in less prominent places. You want to keep your eye moving around the painting, but not running way off the piece. She mentioned that cool colors in the background make it recede and warm colors in the foreground bring it forward. Use your own photos as reference and after you have begun, put the photo away and make the composition work. You don’t have to put everything that is in the photo into your painting. A suggestion for seeing if you want to add something to your piece is to place a piece of acetate on your painting and then drawing over it with Poska pens.



Artist Opportunities

Bethlehem Art Association on Facebook

Ten years ago the BAA set up a Group Facebook page for members to post art, art supplies for sale or trade, events and exhibits by members, and other information of interest to other members. The page was later changed to a public page. This led to extraneous postings by people who were not BAA members and a drop in postings by members, possibly due to reluctance to have their posting go out into a broader world. On March 1 the BAA Facebook page will again be a private page. This means that only members of the Bethlehem Art Association will be able to post and to see what other members post.

Hopefully this will result in more communication among members. If you have any problems joining, please email Peter Keitel at pjkeitel@gmail.com and he will send an invite to your email address from the page.



BAA Spring Art Challenge

The BAA Art Challenge provides an incentive for you to create and share your work. It's time to start thinking about spring. Among the flowers that best represent spring are the early arrivals such as snowdrops. There are no rules for the Challenge. Therefore, if there is another flower or subject that means spring to you, feel free to submit it. Also, there is no problem in reaching into your archives. Go to www.bethlehemartassociation.com/baa-art-challenge for instructions on how to participate in the Challenge, or just to see how different artists have interpreted a given subject.

Photo Courtesy of Yoksel Zox on Unsplash

Artist Grants Available

Through the Arts Center in Troy

For artists and non-profits residing in Albany, Rensselaer, and Schenectady counties "Arts Thrive & Grow" is a dynamic program dedicated to supporting artists, non-profits, and art-based organizations in the capital region. Through a range of grants and initiatives, we empower individual artists to create new works, non-profits to enrich their communities with art, and smaller art-based organizations to build capacity.



**arts
thrive
and
grow**

For more information go to artscenteronline.org/grants/
Deadline is March 15

Oh, Oh, Origami

BAA member, Patricia Davis will be teaching a class for North Central Colonie Continuing Education On April 16. "Oh, Oh, Origami", one night only, 7-8pm. For more information go to North Colonie Central Schools website, go to Continuing Education Program or sign up in person at Shaker High School. There is a \$20.00 fee that includes supplies.



District Office is at 91 Fiddlers Lane, Latham, NY phone 518-785-8591.



Venues

BAA Community Exhibit Schedule Mar. 2024 through June 2024

Please sign up!

Sign up at a monthly meeting to schedule a showing of your work
or contact Jacqueline Smith at 518-489-1882 or TShock1882@aol.com

VENUES RESERVED FOR BAA MEMBERS

	MAR	APR	MAY	JUNE
BANK OF COXSACKIE Rte. 9W, Glenmont - 10-13 spaces	OPEN		OPEN	
MOHAWK HUDSON LAND CONSERVANCY Prefers Nature Themes Kenwood Ave., Delmar - 6-8 hangers	JACQUELINE SMITH	KRIS KELLY	OPEN	OPEN
BETHLEHEM CHAMBER OF COMMERCE 3 small 3 large paintings Main Square, Suite 27 318 Delaware Ave. Delmar Contact Diane Wozniak dcwozniak@gmail.com or 518-698-1819	OPEN	JOHN TOBISON	OPEN	OPEN

VENUES FREQUENTLY AVAILABLE FOR BAA MEMBERS

Berne Public Library, 1763 Helderberg Trail, Berne, NY

Contact Ann Hein at 914-953-0804 or ahein6711@yahoo.com

The Massry Residence at the Daughters of Sarah Senior Community:

Contact Bridgit Rockwell at 518-724-3406. Space for 15 pictures

Merriman and Pfister, An Artisan's Marketplace. Located behind the Perfect Blend at the Four Corners.

Contact Kathy Agneta at 518-588-7268

Big Eye Gallery Fine Arts and Crafts, 270 County Route 405, South Westerlo, NY

Contact Hope Konecny at 518-66-5833

Bethlehem Public Library, Delaware Ave., Delmar:

Please use the Library website at "Book a Space" to reserve a date to hang paintings.

The system will send a confirmation.

Beverwyck Independent Retirement & Assisted Living:

Contact Jessica Steber, 518-451-2111 or Jessica.Steber@SPHP.com

Beverwyck Lane/Autumn Drive, Slingerlands, 15 spaces, availability.

Uncommon Grounds Coffee & Bagels, 1235 Western Ave., Albany:

Contact Saratoga-Arts.org for more information, but you must be a member of their group to show your paintings at any Uncommon Grounds location.

Voorheesville Public Library: 51 School Rd., Voorheesville

Contact Lynn Kohler at 518-765-2791 to schedule a show and reception.



CALENDAR IS SUBJECT TO REVISION

This Year's Main Events

*All Monthly Meetings gather at 6:45PM & begin at 7PM
in the Bethlehem Public Library Community Room unless otherwise noted*

Pay close attention to DAYS, DATES, and LIBRARY or ZOOM

- | | |
|---------------------------------|---|
| Thursday, September 21 ~ | Uses of Photography in Painting with Peter Keitel |
| Thursday, October 12 ~ | Mixed Media Landscape Collage with Cathy Laccetti |
| Thursday, November 2 ~ | Fall Show Submissions Drop-off at
Bethlehem Public Library ~ 4:00pm - 6:00pm |
| Friday, November 17 ~ | Fall Show Reception ~
Judge's Comments by Peg Foley |
| Saturday, November 18 ~ | Workshop ~ Collage Landscape with Cathy Laccetti |
| Thursday, November 30 ~ | Fall Show Removal by 5:00pm (No Exceptions) |
| Wednesday, December 13 ~ | Holbein Art Materials Presentation ~ Lexi Hannah |
| Thursday, January 18 ~ | Watermedia Demo with Sterling Edwards ~ ZOOM |
| Thursday, February 15 ~ | Member Critique ~ Eden Compton 3:00-5:30pm |
| Monday, March 18 ~ | Abstract Painting in Multi-media with Kit Kelly Yedinak |
| Thursday, April 11 ~ | Annual Planning Meeting ~ ZOOM |
| Saturday, April 13 ~ | Workshop ~ Abstract Painting with Kit Kelly Yedinak |
| Wednesday, April 24 ~ | Fabric Art with Kathy Velis Turan |
| Wednesday, May 1 ~ | Spring Show Submissions Drop-off at
Bethlehem Public Library ~ 4:00pm - 6:00pm |
| Tuesday, May 21 ~ | Spring Show Reception ~
Judge's Comments by Oscar Bogran |
| Friday, May 31 ~ | Spring Show Removal by 5:00pm (No exceptions) |
| Thursday, June 20 ~ | Picnic ~ Five Rivers Environmental Center |